



Designing with Actinic Developer

Under the copyright laws, neither the documentation nor the software may be copied, photocopied, reproduced, translated, or reduced to any electronic medium or machine-readable form, in whole or in part, without the prior written consent of Actinic Software Ltd.

'Actinic', 'Actinic Catalog', 'Actinic Developer', 'Actinic Order Manager' and 'Actinic Business' are registered trademarks of Actinic Software Ltd.

Other parties' trademarks or service marks are the property of their respective owners and should be treated as such.

Note: This guide covers Actinic Developer version 6 created by Actinic Software Ltd.

All the Actinic screen shots are taken from Actinic Developer Version 6.

Actinic Software Ltd

Locke King House
2 Balfour Road, Weybridge
Surrey, KT13 8HD
Tel: +44 (0) 845 129 4800
Fax: +44 (0) 1932 871001
www.actinic.co.uk
enquiries@actinic.co.uk

Table of Contents

Table of Contents.....	3
Introduction	6
Conventions.....	7
Other Starter Guides	7
Installation	8
Upgrading from Previous Versions - the Site Upgrader	8
Your 'Site1' Directory	9
Getting Help	10
Help Topics.....	10
Context Sensitive Help.....	10
Other Help Sources	11
<i>Advanced User Guide</i>	<i>11</i>
<i>The Actinic Forums</i>	<i>11</i>
Settings That Will Affect Design.....	12
<i>Choosing a Theme</i>	<i>12</i>
<i>'Design Text' area</i>	<i>12</i>
<i>Design Options</i>	<i>13</i>
<i>Section Links in Multiple Columns.....</i>	<i>15</i>
Understanding Templates.....	16
<i>The NETQUOTEVARs</i>	<i>16</i>
Help With The Templates.....	17
<i>The Template Manager</i>	<i>17</i>
<i>The Main Help</i>	<i>19</i>
A Brief Guide to the Key Templates	19

The Actinic Dreamweaver Integration	20
Installation	20
The Source Inspector	20
Customising the Online Store	24
Products	24
<i>Act_ProductBody.html</i>	24
<i>Act_ProductLine.html (and related product line layout templates)</i>	25
<i>Changing the Appearance of Product Names</i>	27
<i>Showing Stock Levels Online</i>	27
<i>Including Alternative Product Images</i>	28
<i>Customising Where Attributes Appear</i>	28
<i>Using a Graphic as a Product Separator</i>	29
<i>Laying Out Product Information in Very Compact Rows</i>	30
Section Links	31
<i>Creating Pages of Product Thumbnails</i>	32
Managing Overall Layout Templates	34
The Bulk	34
Variables That Can Be Used in a Store Layout Template	35
Variables That Can Be Used in a Brochure Layout Template	36
Customising Overall Layout Templates	36
<i>Inserting Parent Section Links into the Overall Layout Template</i>	37
<i>Only Using Certain Navigation Icons</i>	38
<i>Inserting Custom Navigation Icons</i>	39
<i>Inserting 'Next' and 'Previous' Links</i>	40
Dynamic Section Lists	42
<i>Creating a Drop-Down List Containing the Top-Level Sections in the Store</i>	43
<i>Inserting The Top-Level Section in Large Font, With the Sub-Sections Listed Underneath</i>	44

Custom Properties	47
<i>Creating Custom Pop-Up Windows.....</i>	<i>47</i>
Deploying Your Work.....	50
Creating Custom Themes	52

Introduction

About This Guide

This guide covers most aspects of designing a store with Actinic Developer. In particular, it will look at using the HTML templates that are used to lay out the online store pages. This guide does not, however, cover adding store content and processing orders. If you need information about these areas, please see the 'Getting Started with Actinic Catalog and Actinic Business' document, which is available to download from <http://www.actinicdownloads.com/>.

From the point of view of adding store content and processing orders, Actinic Developer is identical to Actinic Business.

Actinic Developer will allow you to create as many Actinic sites as you want within the application. For each Actinic site you need to deploy to a customer's premises, you will need to purchase a license of either Business, Catalog or Order Manager for the customer; depending on how much functionality you want to make available to your customer. The following table shows what key feature areas are available with each Actinic solution.

	--Build--	-----Deploy-----		
	Developer	Business	Catalog	Order Manager
Product Management	Y	Y	Y	-
Web Page Management	Y	Y	Y	-
Customer Accounts	Y	Y	-	-
Order Management	Y	Y	Y	Y
Integration with Actinic Link	Y	Y	-	-
Basic Design Tools	Y	Y	Y	-
Advanced Design Tools	Y	-	-	-
Multiple site creation	Y	-	-	-

Please note that although Actinic Developer has the same basic functionality as Actinic Business, if you are creating a site that is designed to be run in Actinic Catalog then you need to avoid using the following Business-only features:

- Customer Accounts
- Price Schedules
- External Linking

- Integration with Actinic Link
- Advanced Custom Property-based Searching

Conventions

In this guide the following conventions will be used:

- Keyboard commands will be shown in square brackets: [Enter], [Ctrl+X].
- Buttons/tabs/menu options in the program will be shown in single quotes: 'OK', 'Cancel', 'Checkout'.
- Successive directions will be separated by a vertical bar: For instance, clicking on the 'View' menu, then selecting 'Business Settings' and then selecting the 'Tax' tab is shown as: 'View | Business Settings | Tax'.
- 'Catalogue' is used within this guide as the generic name for your shop.
- Wherever you see two numbers in brackets separated by a comma - e.g. (-1, 2173) - that is a reference to a prompt in 'Design | Text'. To use these values, click the 'Go to' button in 'Design | Text' and enter the first value into the 'Phase' field and the second value into the 'ID' field.

Other Starter Guides

Starter Guides for other Actinic products are available to download from <http://www.actinicdownloads.com/>.

Installation

To install the software onto your PC:

1. Place the Actinic Developer CD in your CD drive.
2. It should automatically run. If it does not, you will need to:
 - Click the 'Start' button in Windows taskbar and go to 'Run'
 - Click 'Browse' and then go to 'D:' (where D: is your CD drive)
 - Select 'setup.exe' and double click

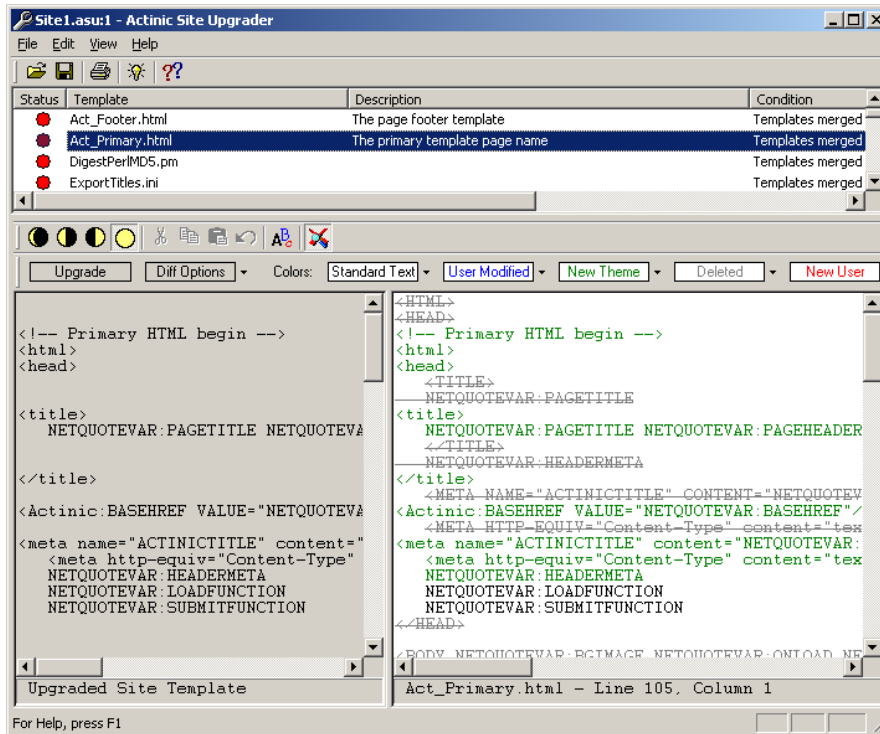
This will start the first of the 'Installation Wizards' that will guide you through the short set-up process. It is possible to achieve a perfectly satisfactory installation by simply accepting all the default settings suggested to you by the Wizards. Click 'Next' to take you from screen to screen, click 'Back' to take you to the previous screen and click 'Cancel' to abort the installation process.

Note: Remember that this process will install Actinic on your computer. It will not install anything on the web site.

It is a good idea to keep a safe record of your authorisation key supplied with the software **and** the version details which you find in 'Help | About..' in your Menu Bar.

Upgrading from Previous Versions – the Site Upgrader

If you are upgrading from a previous version of Actinic, then you will see the 'Site Upgrader'. The Site Upgrader will look at your existing templates and compare them to the templates in the latest version of Actinic Ecommerce. It will then recommend changes to make to the template and ask you to confirm that you want the changes made. Once you confirm the changes, the template will be upgraded to the latest version.



For more information about how to use the 'Site Upgrader', go to 'Help | Help Topics' in Actinic Ecommerce, and then look at the 'Contents' tab. Towards the bottom is an entry for 'Site Upgrader'

Your 'Site1' Directory

All the files specific to your initial ecommerce store, including the Actinic ecommerce database - ActinicCatalog.mdb – are contained within the 'Site1' directory. You can locate your Site1 folder by going to 'C:\Program Files\Actinic ecommerce v6\Sites\Site1'.


Note: All your shipping and handling details are contained in a database called SimpleShipping.mdb within the 'ShipControl' folder in 'Site1'.

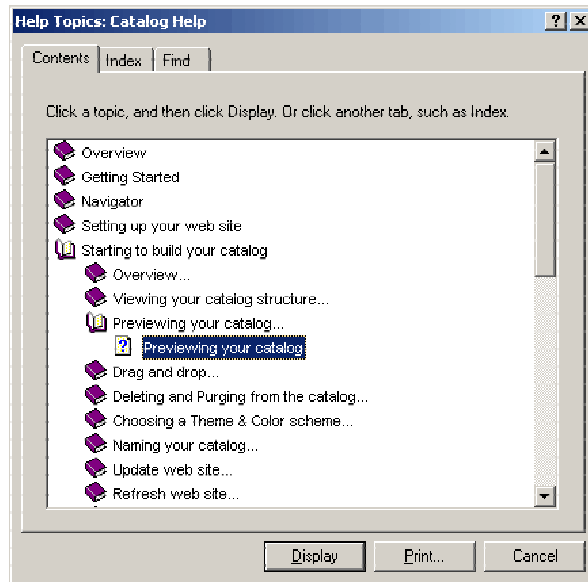
The 'Site1' directory is your working directory, and is the ideal place to save any files you create and wish to use. It is quite a good idea to put a shortcut to 'Site1' (and to any other site folders you create) on your Desktop.

Getting Help

Actinic Developer comes with lots of ways to get help should you need it.

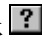
Help Topics

Actinic's Main Help contains pages of in-depth information on all areas of the application, together with appropriate links to additional information in other chapters. To access the Help Topics, click the  button on the Menu bar, go to 'Help | Help Topics' or press [F1] to see the following screen:



You have the choice of searching by Chapter ('Contents'), by paragraph heading ('Index') or by key word ('Find').

Context Sensitive Help

For a brief description of a button/box or field, click on the question mark  on the tool bar and then click on the field that you need to know about.

Other Help Sources

Advanced User Guide

The Advanced User Guide is a collection of hints, tips and techniques to help you build your store. It is available to download from the Actinic web site <http://www.actinic.co.uk/>. It is updated regularly so it is worth checking back every two or three months for the latest version with the latest fixes.

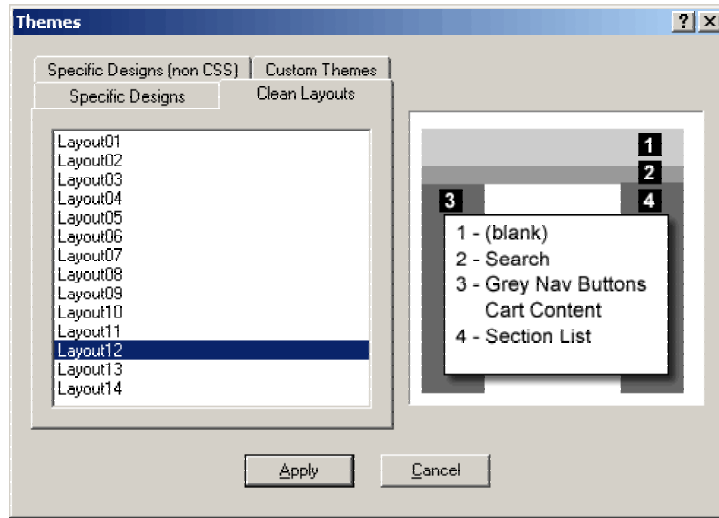
The Actinic Forums

The Actinic Forums are email-based newsgroups made up of existing Actinic users. When you email questions to the groups you will normally receive a prompt response. Ensure, however, that your questions contain as much relevant detail as possible. You can register for the forums at <http://forums.actinic.com/>.

Settings That Will Affect Design

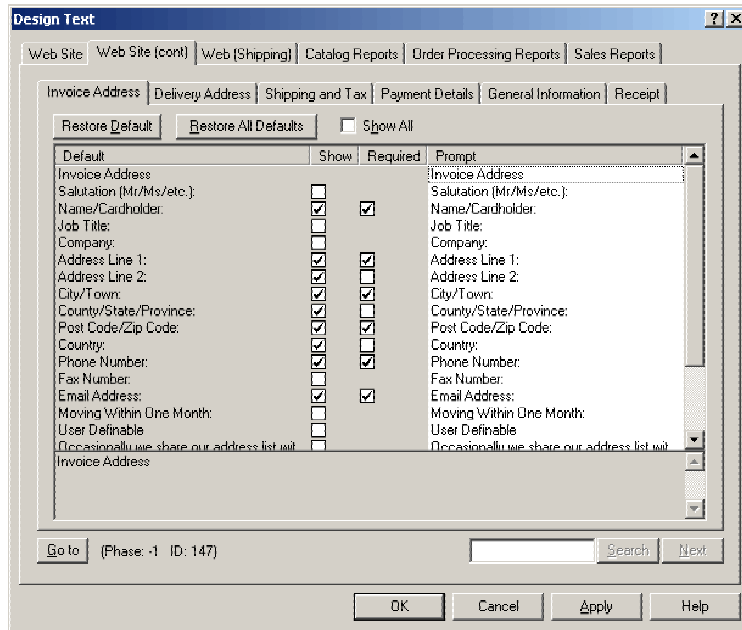
Choosing a Theme

Even if you are doing your own custom design for an Actinic store, you need to start with a theme. The best one to start with is called 'BusinessCSS', which you will find in 'Design | Themes | Specific Designs'. This is a 'vanilla' theme that has very little customisation built in. Alternatively, pick one of the 'Clean Layouts', ensuring that you select one that already lays out key store objects in roughly the configuration you want.



'Design | Text' area

The 'Design | Text' area contains all the text prompts that are shown to your customers online, as well as all the text prompts that are used the reports. Many of these text prompts contain basic HTML formatting that will affect the layout of the store. If you have located a fragment of HTML that you cannot identify as being part of any of the templates, then the likelihood is that it will be found in 'Design | Text'.

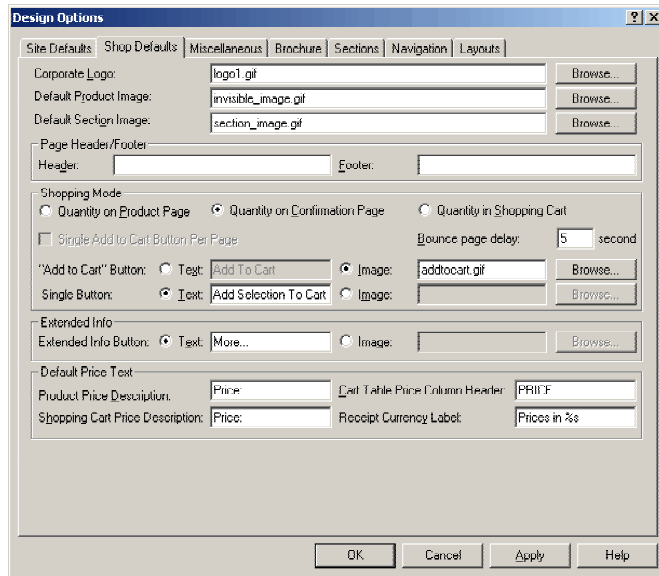


You can browse through the tabs in 'Design | Text' or do a search by entering a value in the 'Search' field and clicking 'Search'. Most of the HTML can be found within the 'Web site | HTML' tab.

Note: wherever you see '%s' or '%d' that is a variable representing a text string. It will be automatically populated as the pages are generated by Actinic, or as the pages are displayed to the customers online.

Design Options

The 'Design Options' area contains a lot of database settings that will have an affect on the appearance of your store.



The following table describes each tab and what the tab controls:

Name	Description	Key Contents
Site Defaults	Appearance settings that will affect all your brochure and store pages.	Background colours/images, global custom property values and details
Shop Defaults	Appearance settings that will only affect your store pages.	Corporate logo image, default product and section link images, default shopping mode settings, default way prices are described
Miscellaneous	A further collection of store-specific settings.	Tax inclusive/exclusive pricing, displaying prices in a second currency, home page icon link, terms and conditions page location
Brochure	Display settings specific to your brochure pages	Brochure pages corporate logo, default brochure overall layout template, control over brochure link to store pages
Sections	Control over placement of section navigation links	Presence/placement of parent section links, presence/placement of standard list of section links, presence/placement of list of top-level section links, presence of site-map
Navigation	Control over content of store navigation bar	Description and image files for icons in store navigation bar
Layouts	Default templates for pages, section links, products and pop-ups	Default overall layout templates for key store areas, default section link layout templates, default product template, default pop-up window template

Section Links in Multiple Columns

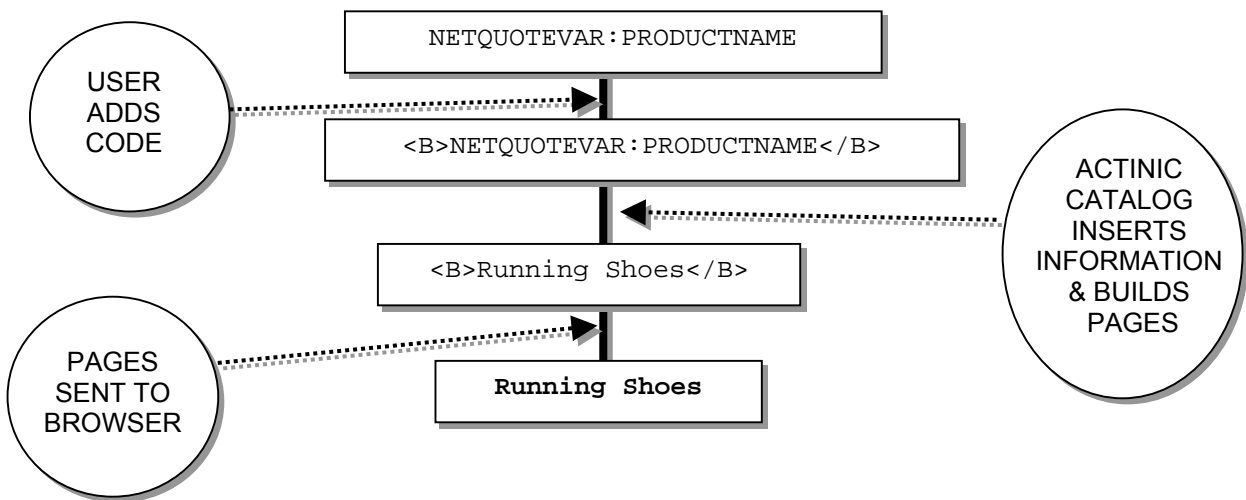
The main layout-specific area that is controlled within Design Options is the placement of section links within columns. Within 'Design Options | Sections' you can set the default number of columns that the section links are laid out in. This can then be overridden at the section level by double-clicking on a section and going to the 'Layout' tab.

Understanding Templates

The Actinic HTML pages are built from about 40 different templates, each one controlling the layout of a different area of the online store.

The names of these templates all begin with 'Act_-' and they can all be found within the site directory of your actinic store (this will initially be 'Actinic Ecommerce v6\Sites\Site1\').

The templates work just as if you were doing a mail merge to do a mail out. You would create a letter template with merge fields in and when the letters are generated, the merge fields are replaced by the values in your database. When Actinic Developer generates the HTML, it replaces the variables (NETQUOTEVAR:WHATEVER) with the values in the database.



When you open a template within a visual web editing application such as Macromedia Dreamweaver, you have to remember that most of the templates are not complete HTML pages - they are fragments of HTML. Some of them will look like the object they are representing, whereas some may look (at first) a bit of a jumble. You may find it easier to look at the HTML code, rather than the visual appearance of the template.

The NETQUOTEVARs

There are two types of variable within the templates:

- **String NETQUOTEVARs** - these are NETQUOTEVARs that are replaced by a text string from the Actinic database. An example is


NETQUOTEVAR:PRODUCTNAME from Act_ProductLine.html, which will be replaced by the short description of the product.

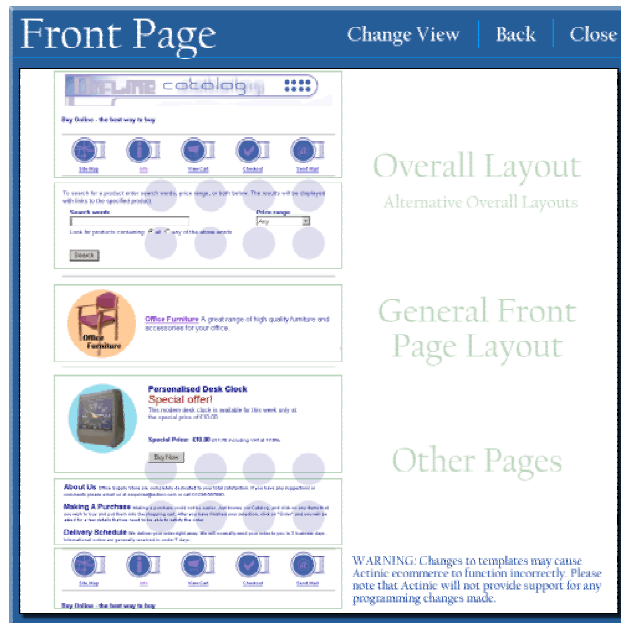
- **Object NETQUOTEVARs** - these are NETQUOTEVARs that are replaced by an HTML object, the code for which normally comes from another template, but may come from some HTML within 'Design | Text'. An example for this is NETQUOTEVAR:PRODUCTIMAGE from Act_ProductLine.html, which will be replaced by the product image - the code for which comes from Act_ProductImage.html.

Help With The Templates

There are many places within the application to help you with the templates.

The Template Manager

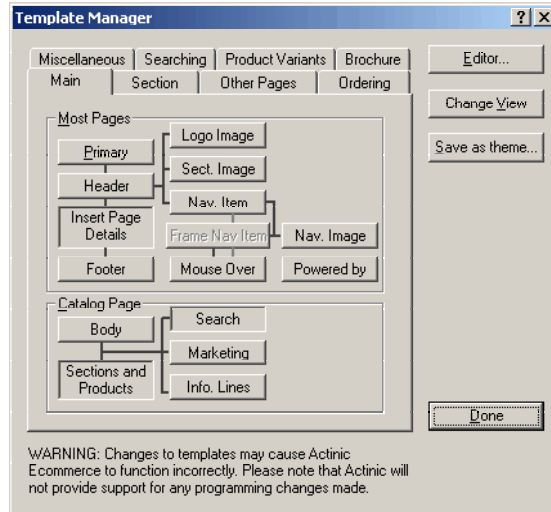
Go to 'Advanced | Template Manager' or click the  button on the toolbar.



The Template Manager is designed to guide you to the correct template by displaying a schematic representation of an Actinic store page. You can move your mouse over this image and active areas will flash red. When you click on one of these areas it will either

open the template that controls that area, or else take you to another page with a more in-depth selection to choose from.

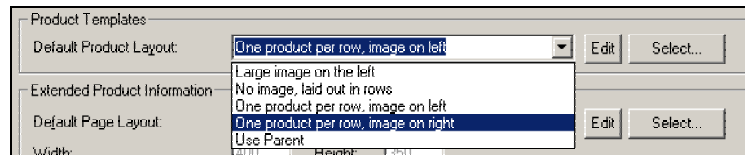
If you prefer, you can change to a dialogue-based Template Manager by clicking on 'Change View'.



Some more experienced users find this more useful, as there are generally fewer clicks to access your required templates.

The other feature that this dialogue-based template manager has is an 'Editor' button. You can click this button in order to select a template editor other than 'Notepad' to edit your templates in.

The only other way to access templates via the Actinic Developer user interface is by clicking the 'Edit' buttons that appear next to the template selection drop-down lists in Design Options and the dialogues for sections, products, brochure pages and brochure fragments.



Note: if a template selection drop-down shows 'Use Parent' then this item will use the template that is selected at the level above it. For brochure pages and fragments, this will be the template selected in 'Design Options | Brochure'. For top-level sections, this will be set in 'Design Options

| *Layouts*'. For sub-sections and for products, the parent template will either be set in the containing section properties, or within '*Design Options | Layouts*'.

The Main Help

The main help is an invaluable source of information about the templates. Go to 'Help | Help Topics' (or press [F1]) and go to the 'Index'. The first topic listed alphabetically is 'A Brief Guide to the Key Templates' (which is replicated below) and then you will see an alphabetical list of all the templates within Actinic.

If you double-click on any of these topics you will bring up a help screen with a short description of the template, and then a list of all the variables within that template with what they are, what they do and where the information comes from.

A Brief Guide to the Key Templates

Template	Description
Act_Primary.html	Otherwise known as the 'overall layout' template. Contains the <HEAD> and <FORM> information for every page. Can also contain all design and navigation elements that surround the bulk area, and consequently is responsible for the vast bulk of the page look and feel. Actinic allows you to set up a range of these templates in order to have different pages looking/working differently.
Ac_BrochurePrimary.html	As above, but for the brochure pages.
Act_ProductLine.html	Lays out the products in the online store. It is possible to create your own range of Act_ProductLine templates.
Act_ProductBody.html	Sets up each section page. Edit this to change the properties of the table in which the products are laid out.
Act_SectionLine.html	The default template name for the section links. You can have a range of these just like you can have a range of Act_ProductLine templates.
Act_CatalogBody.html	Controls the appearance of the first catalogue page. Add your own HTML to include extra images, information, promotions etc.
Act_OrderDetails.html	Here you can change the appearance of the screen that appears when you add a product to the cart.
Act_Order00.html -- Act_Order04.html	Here you can make advanced changes to the checkout phase such as altering the nature of a form element.

The Actinic Dreamweaver Integration

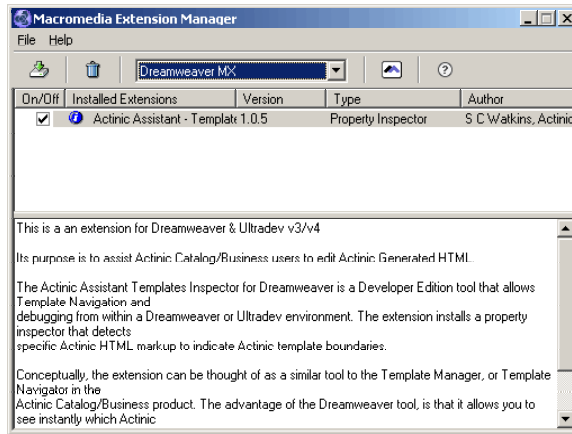
The Actinic Dreamweaver Integration currently has one component:

- **Source Inspector** – Use this to allow Dreamweaver to show which templates were used to layout which elements of the store pages

Installation

To install the Actinic extensions, locate the file called 'Actinic Assistant.mxp' in an Actinic Developer installation sub-folder. Typically, this will be

1. C:\Program Files\Actinic ecommerce v6\Extensions\Dreamweaver\Actinic_Assistant\Actinic Assistant.mxp
2. Double-click on the file to run it.
3. After accepting the license terms of using the extensions, you will see the Macromedia Extensions Manager.

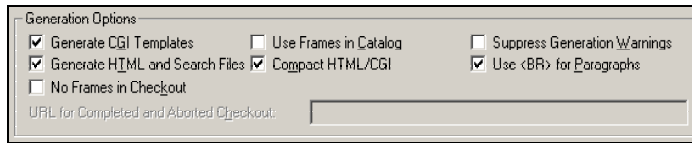


This shows that the Actinic extensions, known as 'Actinic Assistant', have been successfully installed.

The Source Inspector

In order to use the Source Inspector, you first need to uncompact the generated HTML. By default, Actinic compresses all the HTML code in the generated pages by removing all blank spaces and HTML comments. However, you will need all these comments in order for the source inspector to work.

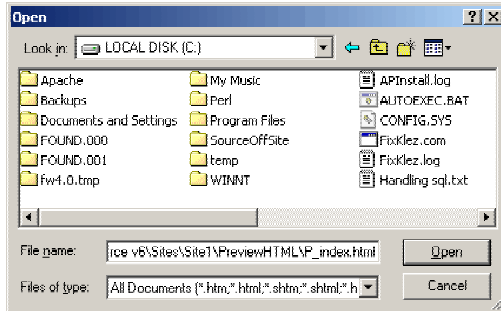
To uncompact the store HTML, go to 'Design Options | Miscellaneous' in Developer and uncheck where it says 'Compact HTML/CGI'.



Next, you will need to carry out a full preview. To do this, click the  button on the Developer toolbar or go to 'Web | Offline Preview'.

Browse to any store page you are interested in and copy the page address to the clipboard.

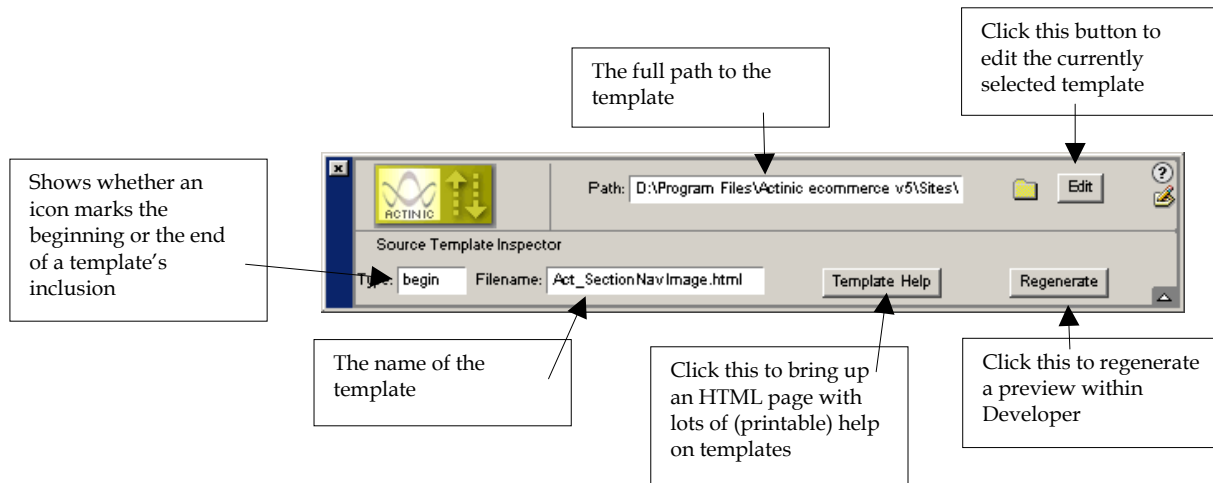
Next, in Dreamweaver go to 'File | Open' and paste the address of the page into the 'Filename' field.



Throughout the generated page you should see Actinic symbols within a yellow box.

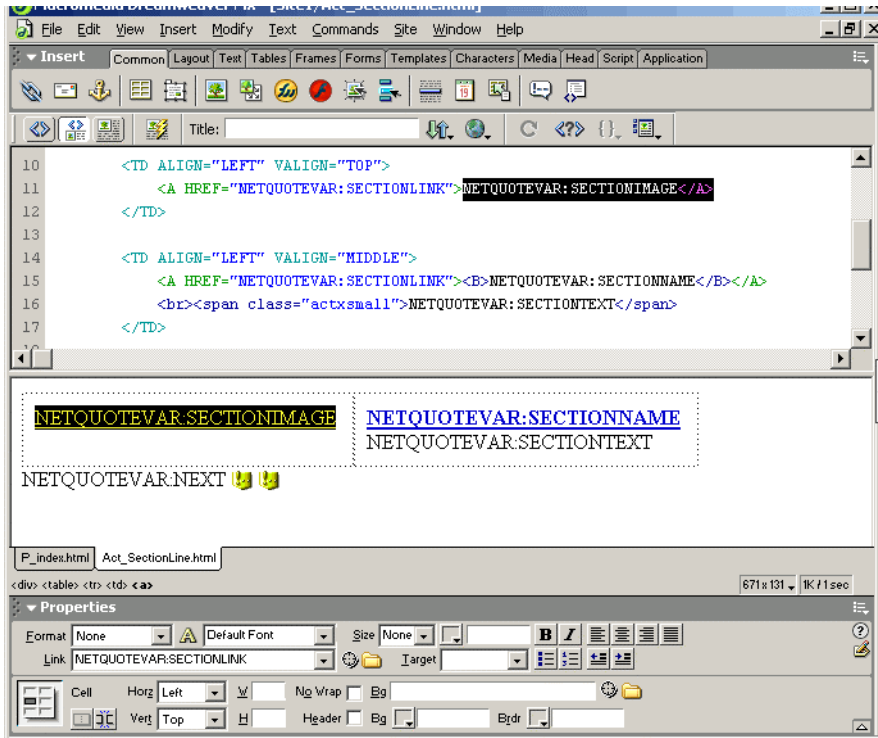


These tags indicate when a section of a page has been built with a particular template. Within Dreamweaver, the beginning and end of each template's inclusion will be marked with a one of these icons. When you click on one of these icons, the 'Properties' bar changes to look like the following:



To use these icons effectively:

1. Locate the icons around a store element that you are interested in changing the look of.
2. Browse through the icons until the 'Filename' field shows the name of a likely looking template. If you need information about which template does what, refer to the file launched by the 'Template Help' button (or refer to the main help within Actinic Developer).
3. Click the 'Edit' button to open that template within Dreamweaver.



4. When you have finished making changes, save and close the template.
5. You should now be looking at the previewed store page again, and the 'Properties' panel should still be displaying the Source Inspector fields.
6. Click the 'Regenerate' button to carry out another preview in Dreamweaver. This will allow you to preview how the changes in the template will affect the online store.

Customising the Online Store

Products

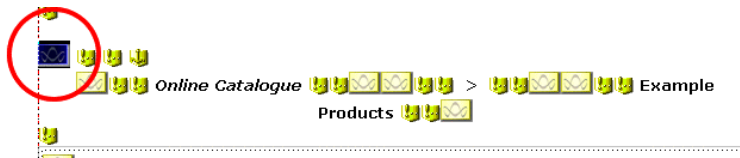
Products are, naturally, the most important elements of an online store – they are your money makers.

There are two key templates that affect the layout of your online store:

- **Act_ProductBody.html** – The template that controls the position of the elements within a section page
- **Act_ProductLine.html (and other product layout templates)** – The templates that insert the actual products into the store pages.

Act_ProductBody.html

In order to locate Act_ProductBody.html using Actinic icons in Dreamweaver, click on the Actinic icon just in front of the parent section navigation links (remember that there are no parent section navigation links on the front page of the store).



There are various variables in Act_ProductBody.html are useful to know about:

NETQUOTEVAR:	Description	Templates Used
PARENTSECTIONSTOP / PARENTSECTIONSBOTTOM	Parent section links	Act_ParentSectionsLink.html, Act_ParentSectionsThis.html, Act_ParentSectionsSeparator.html
TOPLEVELSECTIONSTOP / TOPLEVELSECTIONSBOTTOM	List of store top level sections	Act_SectionLine.html (or alternative section line templates if available)
TOPSECTIONSEPARATOR / BOTTOMSECTIONSEPARATOR	Horizontal rule separating section list	Act_SectionSeparator.html
SECTIONLISTTOP / SECTIONLISTBOTTOM	List of sub-sections	Act_SectionLine.html (or alternative section line templates if available)

NETQUOTEVAR:	Description	Templates Used
PRODUCTBULK	Products for this section	Act_ProductLine.html (or alternative product line templates if available)
SINGLEADD	Single add to cart button	Act_SingleCartButton.html

It is `NETQUOTEVAR:PRODUCTBULK` that is responsible for inserting products into the page. The variable is placed within an HTML table, which has a default width of 500 pixels, a default cell padding value of 10, and, crucially, has three columns.

All the product line layout templates are laid out within this table, and they provide the content for this table (all the `<tr>` tags and `<td>` tags).

Act_ProductLine.html (and related product line layout templates)

Note for Dreamweaver users: Because the product line layout templates are not complete HTML pages, and also due to the fact that they contain `<tr>` and `<td>` tags but no `<table>` tags, Dreamweaver has problems displaying them in design view.

One way around this is to temporarily add in a `<table>` tag just below `NETQUOTEVAR:ENDSEPARATOR` and add a `</table>` tag just above `NETQUOTEVAR:NEXT`. Just remember to remove these before you preview!

The key variables within a product line layout template are as follows:

NETQUOTEVAR:	Description	Source
INCLUDE Act_ProductSeparator.html	Separator between products	Act_ProductSeparator.html
ENDSEPARATOR	Marks the beginning of a product	None
PRODUCTNAME	Short Description	'Short description' field
PRODUCTREF	Product Reference	'Product reference' formatted as per (-1, 65) in Design Text
PRODUCTIMAGE	The product image	'Image' field and Act_ProductImage.html
EXTINFOLINK	Text link for pop-up	'Link text' field
EXTINFOBUTTON	Button for pop-up	Act_ExtendedInfoButton(Image).html
BEGINLINK / LINKTEXT / ENDLINK	Standard product hyperlink	'File/URL' and 'Information Link Text' fields.

NETQUOTEVAR:	Description	Source
PRICEEXPLANATION	Price schedule-specific message	'Customer Message' field (not in Actinic Catalog)
PRODUCTPRICE	The product price	'Price' field and Act_ProductPrice.html
OTHERINFOPROMPT*	Other info prompt and text field	'Other info' field formatted as per (-1, 2161) in Design Text
DATEPROMPT*	Date prompt and drop-downs	'Date' field formatted as per (-1, 2162) in Design Text
CARTERRORXML*	The product page error message	This is dynamically inserted via XML in the online store
PRODUCTQUANTITY*	Quantity prompt and text field	Format from (-1, 2173) in Design Text.
ADDTOCARTBUTTON	Cart button	Act_CartButton.html, Act_CartButtonImage.html
NEXT	The end of a product	

* indicates features that are only used when the 'Shopping Mode' is set to 'Quantity on Product Page'.

In addition to the above, there are several extra variables that can be used within a product line template that are not part of the standard templates.

NETQUOTEVAR:	Description	Source
STOCKLEVEL	Product stock level	'Estimated Stock In Hand' field
VARIANTLABEL n	The label for an attribute	Attribute 'HTML for Name' field, Act_VariantAttributeName.html
VARIANTSELECTOR n	The selector for an attribute	Various templates, depending on the type of selector used
VARIANTADDTOCARTBUTTON	Cart button when above variables used	Act_CartButton.html, Act_CartButtonImage.html
IMAGEFILE / IMAGEHEIGHT / IMAGEWIDTH	The details of the product image	'Image' field in product
INFOTEXT	The pop-up window text	Extended Information 'Text' field
INFOIMAGE / INFOIMAGEHEIGHT / INFOIMAGEWIDTH	The pop-up window image details	Extended Information 'Image' field

Note: n is a whole number between one and twenty.

What follows is a number of different techniques for manipulating product templates. They all involve editing the HTML code of the templates (rather than editing them visually).

Note: Remember that there are three places to select product templates:

- **Design Options | Layouts** – default for all products in the store
- **Edit Section | Product** – default for all products in the section
- **Edit Product | General** – specific to selected product

Changing the Appearance of Product Names

1. Locate `NETQUOTEVAR:PRODUCTNAME` within the product line template.
2. Change the HTML code surrounding the variable in order to change the appearance of the product names.

For instance, in order to make product names smaller, change:

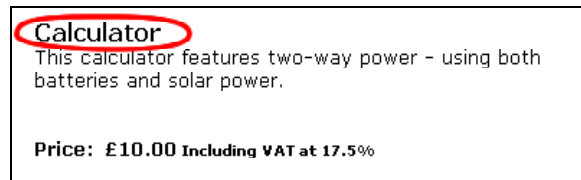
```
<span class="actregular"><b>NETQUOTEVAR:PRODUCTNAME</b></span>
```

to read:

```
<span class="actsmall"><b>NETQUOTEVAR:PRODUCTNAME</b></span>
```

```
<span class="actsmall"><b>NETQUOTEVAR:PRODUCTNAME</b></span></a>
```

3. Save and close the template and preview the store to see the result.



Showing Stock Levels Online

`NETQUOTEVAR:STOCKLEVEL` will include the stock level of the current product into the HTML. In order to use it, enter code similar to the following into the product line template:

We have `NETQUOTEVAR:STOCKLEVEL` available.


Calculator
 This calculator features two-way power - using both batteries and solar power.
 We have 42 available.
Price: £10.00 Including VAT at 17.5%

Including Alternative Product Images

The variables `NETQUOTEVAR:INFOIMAGE`, `NETQUOTEVAR:INFOIMAGEHEIGHT` and `NETQUOTEVAR:INFOIMAGEWIDTH` are normally used within the extended information pop-up page templates to include the image into the pop-up window. Even if you are not using pop-up windows then you can still select an image within the 'Extended Information | Image' field and then lay out these alternative product images within the main product line template.

In order to do this, include code similar to the following within your product line layout template:

```
<IMG SRC="NETQUOTEVAR:INFOIMAGE" WIDTH=NETQUOTEVAR:INFOIMAGEWIDTH
HEIGHT=NETQUOTEVAR:INFOIMAGEHEIGHT ALT="NETQUOTEVAR:PRODUCTNAME" >
```



Pair of Men's Walking Boots
 Designed for walking and hiking comfort. Oiled leather uppers for superior weather resistance and non-slip sole for sure footing. [Click here for larger image...](#)

Price: £42.55(Excluding: VAT at 17.5%)

Customising Where Attributes Appear

By default, the choice selection device (e.g. drop-down lists, radio buttons etc.) appears below the attribute name all in one group. The variable `NETQUOTEVAR:ADDTOCARTBUTTON` will always insert the attributes and choices just above the cart button, one underneath the other. In order to break away from this layout, you will need to do the following:

Replace:

`NETQUOTEVAR:ADDTOCARTBUTTON`

with

NETQUOTEVAR:VARIANTADDTOCARTBUTTON

This will stop the attributes from always appearing just above the 'add to cart' button.

You can then insert the attribute labels and selectors individually into the design with the variables `NETQUOTEVAR:VARIANTLABEL n` and `NETQUOTEVAR:VARIANTSELECTOR n` (where n is a whole number between 1 and 20). The way you use these is to insert a label and selector `NETQUOTEVAR` pair with the number 1 (instead of n) for the first attribute, then a `NETQUOTEVAR` pair with the number 2 for the second and so on.

For example, the following HTML will lay out three attributes next to each other within a table:

```
<table width="100%" border="0" cellspacing="0" cellpadding="0">
  <tr>
    <td>NETQUOTEVAR:VARIANTLABEL1</td>
    <td>NETQUOTEVAR:VARIANTLABEL2</td>
    <td>NETQUOTEVAR:VARIANTLABEL3</td>
  </tr>
  <tr>
    <td>NETQUOTEVAR:VARIANTSELECTOR1</td>
    <td>NETQUOTEVAR:VARIANTSELECTOR2</td>
    <td>NETQUOTEVAR:VARIANTSELECTOR3</td>
  </tr>
</table>
```



Using a Graphic as a Product Separator

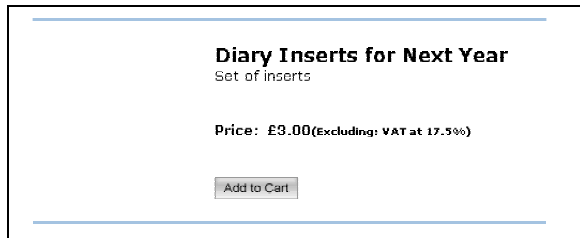
The template `Act_ProductSeparator.html` is used to insert a table row containing a horizontal rule between each product. The following HTML inserts the horizontal line:

```
<HR SIZE="1" ALIGN="CENTER" WIDTH="100%">
```

You can use the default coloured background graphics that come with the 'Clean Layout' themes to replace these with an image. For instance:

```

```



Note: the '480' width comes from the product table being 500 pixels, and cell padding being 10 pixels (at either edge of the table).

Laying Out Product Information in Very Compact Rows

So far, we have not talked about changing the configuration of the actual product cells within the tables. Enter the following code into a new Notepad file and save it as 'Act_ProductLineCompact.html'. It will lay out each product within a very compact individual row:

```
NETQUOTEVAR:ENDSEPARATOR
<tr>
  <td>
    <table width="100%" border="0" cellspacing="0" cellpadding="0">
      <tr>
        <td width="250">NETQUOTEVAR:PRODUCTNAME</td>
        <td align="right" width="100">NETQUOTEVAR:PRODUCTPRICE</td>
        <td align="right">NETQUOTEVAR:PRODUCTQUANTITY</td>
        <td align="right">NETQUOTEVAR:ADDTOCARTBUTTON</td>
      </tr>
    </table>
  </td>
</tr>
NETQUOTEVAR:NEXT
```

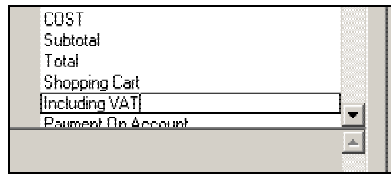
There are a few changes you will need to make to other templates to get this to work well:

1. **Act_ProductBody.html** - Change cellpadding="10" to cellpadding="5" in the main product table.
2. **Act_ProductPrice.html** - Remove the
 at the beginning of the code and insert a
 just before NETQUOTEVAR:TAXMESSAGE.
3. **Act_CartButton.html** - Remove the <p> from the start of the template and the </p> from the end of the template.

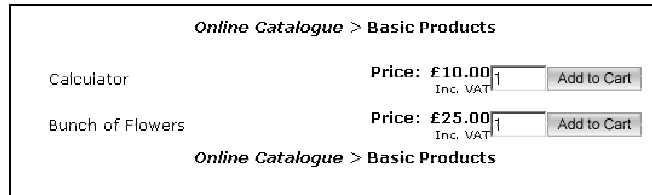
Next, in 'Design | Text':

1. Go to (-1, 2173) and replace the first %s with <!-- %s -->. This will remove the 'Quantity' word from next to the quantity field.

- Go to (-1, 219) and replace 'Including %s' with 'Inc. VAT'. This assumes you are showing tax inclusive pricing and your tax is called VAT.



You can now select this template for any section where you want the products to be laid out within a compact grid. It works best if the 'shopping mode' is set to 'Quantity on Product Page' (with or without a single add to cart button per page).



Section Links

Section line templates are much simpler than product line templates – they only have three possible variables: the section name, the section image and the section description.

This exercise will lay out your section links in three columns on the screen, with the text under the image.



Open 'Act_SectionLine.html' and change the code there to the following:

```
<DIV ALIGN="CENTER">
<TABLE BORDER="0" CELLSPACING="0" CELLPADDING="5" WIDTH="160">
  <TR>
    <TD ALIGN="CENTER" VALIGN="TOP">
      <A HREF="NETQUOTEVAR:SECTIONLINK">NETQUOTEVAR:SECTIONIMAGE</A>
    </TD>
  </TR>
</TABLE>
```

```

<TR>
  <TD ALIGN="CENTER" VALIGN="MIDDLE">
    <A HREF="NETQUOTEVAR:SECTIONLINK">
      <B>NETQUOTEVAR:SECTIONNAME</B></A><BR>
      NETQUOTEVAR:SECTIONTEXT
    </TD>
</TR>
</TABLE>
</DIV>
NETQUOTEVAR:NEXT

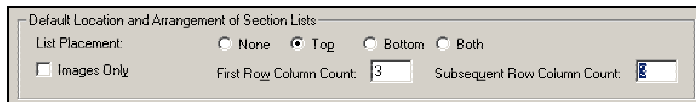
```

The above code will create a section link of 160 pixels in width that, because of the table's cell-padding of 5 pixels, will mean you can use thumbnail images of up to 150 pixels in width with this template.

The next step is to lay out your section links within three columns on the page.

Note: you can lay them out within as many columns as you want, it is just that the above template is suitable for section links that are laid out in three columns.

In order to set the default number of columns throughout the site, go to 'Design Options | Sections' and within the 'Default Location and Arrangement of Section Lists' area, set the 'First Row Column Count' and 'Subsequent Row Column Count' to '3'.



Note: If you only want certain sections to have the section links within them laid out in three columns, then leave the default settings in 'Design Options' as they are and go into specific sections and check 'Override Default Settings' in the 'Layout' tab. You can then enter a 'First Row Column Count' and 'Subsequent Row Column Count' for the sub-section links within that section.

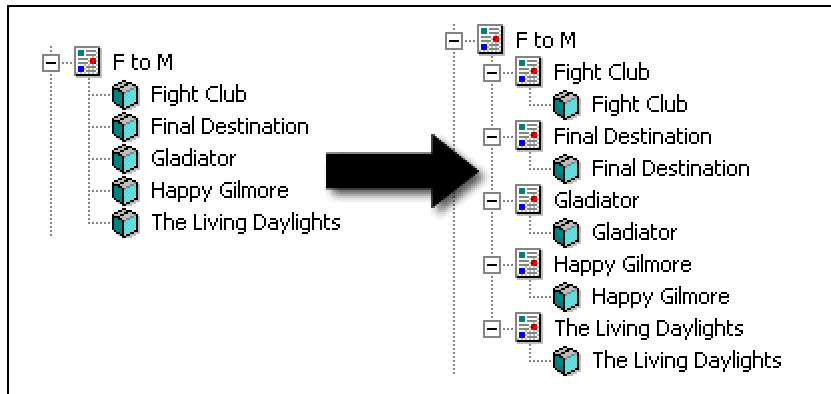
You will also need to create at least two section link layout templates – one for standard section links and one for section links in three columns. The template you are using for the section link is selected in the 'Section Layout' field in the 'Layout' tab of a section.

Creating Pages of Product Thumbnails

Based on the technique described above, it is possible to use your new, more compact section links as product thumbnails and then allow your customers to click on the appropriate thumbnail to be shown a page of further information and an add to cart button.

The way you do this is to create a set up a range of new subsections within a section, with one subsection for each product within that section. The sub-section links will become the

thumbnails, and you then put the actual products within the subsections. The image below shows how this will look within Actinic.



Managing Overall Layout Templates

The overall layout template(s) in your store are responsible for a vast amount of the look and feel of your online store. They lay out all the design elements that surround your 'bulk' area of the page (the area that contains all your products/sections/checkout fields etc). The name of the default overall store layout template is 'Act_Primary.html' and the name of the default brochure overall layout template is 'Act_BrochurePrimary.html'.

You can create and use a range of overall layout templates. Specific overall layout templates can be chosen for the following areas:

- **The default for the entire store** – set in 'Design Options | Layouts'
- **The front page of the store** – set in 'Design Options | Layouts'
- **The checkout pages** – set in 'Design Options | Layouts'
- **The customer login page** – set in 'Design Options | Layouts'
- **The receipt** – set in 'Design Options | Layouts'
- **Individual sections** – set in the 'Layout' tab of a section
- **Default for the brochure pages** – set in 'Design Options | Brochure'
- **Individual brochure pages** – set in the 'Layout' field of a brochure page

The Bulk

The bulk area of an overall layout template is what gets replaced by all the content of a page. At the most basic level it is a wide area containing the variable `NETQUOTEVAR:BULK` (for store pages) or `NETQUOTEVAR:BROCHUREBODY` (for brochure pages).

Also, if you are working on a store overall layout template then you will need to move the following code to the top of the 'black-box' area:

```
<FORM METHOD=NETQUOTEVAR:CGIMETHOD ACTION="NETQUOTEVAR:CGIURL"
NETQUOTEVAR:ONSUBMIT>
<A NAME="top"><INPUT TYPE=HIDDEN NAME=RANDOM VALUE="NETQUOTEVAR:RANDOM">
</A>
NETQUOTEVAR:HIDDENFIELDS
```

And this code to the bottom:

```
</FORM>
```

Note: This code already exists in the templates that come with Actinic Developer so you will just need to copy them into the correct place in the template.

A good size for a black box area is between 500 and 600 pixels in width. When you see **CUSTOMVAR:ACTSTDWIDTH** in the templates, it is a width variable that is replaced by the values entered in 'Design Options | Site Defaults'.

Variables That Can Be Used in a Store Layout Template

When you are building and customising your overall layout template, there is a huge selection of Actinic navigation and content variables that can be used within the templates.

Variable	Description	Template Used
BULK	Main bulk	Various
SIMPLESEARCH	Simple search bar	Act_SimpleSearch.html
LOGOIMAGE	Store logo image	Act_LogoImage.html
PAGEHEADER	Current page name	n/a
SECTIONIMAGE	Current Section Image	Act_SectionNavImage.html
SECTIONTEXT	Current section description	n/a
HEADERTEXT	Store header text	n/a
HEADERGUIDE	Default store header navigation bar	Act_NavigationItem.html
SEPARATORBAR	Horizontal Line	Act_SectionSeparator.html
FOOTERGUIDE	Default store footer navigation bar	Act_NavigationItem.html
FOOTERTEXT	Store header text	n/a
NETQUOTEVAR:NAVSEARCH	Search button	Act_NavigationItem.html
NETQUOTEVAR:NAVBCHECKOUT	Checkout button	Act_NavigationItem.html
NETQUOTEVAR:NAVBCART	Cart button	Act_NavigationItem.html
NETQUOTEVAR:NAVEMAIL	Email button	Act_NavigationItem.html
NETQUOTEVAR:NAVBSITEMAP	SiteMap button	Act_NavigationItem.html
NETQUOTEVAR:NAVINFO	Info button	Act_NavigationItem.html
NETQUOTEVAR:NAVUP	Up button	Act_NavigationItem.html
NETQUOTEVAR:NAVBACK	Back button (new)	Act_NavigationItem.html
NETQUOTEVAR:NAVBCATALOG	Catalog button	Act_NavigationItem.html
NETQUOTEVAR:NAVHOME	Home button	Act_NavigationItem.html
PARENTSECTIONSTOP	Parent section links (top)	Act_ParentSectionsLink.html Act_ParentSectionsThis.html Act_ParentSectionsSeparator.html
TOPELVESECTIONSTOP	List of store top level sections (top)	Act_SectionLine.html (or alternative section line templates if available)

Variable	Description	Template Used
SECTIONLISTTOP	List of sub-sections (top)	Act_SectionLine.html (or alternative section line templates if available)
PRODUCTBULK	Products for this section	Act_ProductLine.html (or alternative product line templates if available)
SECTIONLISTBOTTOM	List of sub-sections (bottom)	Act_SectionLine.html (or alternative section line templates if available)
TOPELVESECTIONSBOTTOM	List of store top level sections (bottom)	Act_SectionLine.html (or alternative section line templates if available)
PARENTSECTIONSBOTTOM	Parent section links (bottom)	Act_ParentSectionsLink.html Act_ParentSectionsThis.html Act_ParentSectionsSeparator.html
NEXT_SECTION_URL	URL for next sibling section	n/a
PREV_SECTION_URL	URL for previous sibling section	n/a
NEXT_SECTION_NAME	Name for next sibling section	n/a
PREV_SECTION_NAME	Name for previous sibling section	n/a

Variables That Can Be Used in a Brochure Layout Template

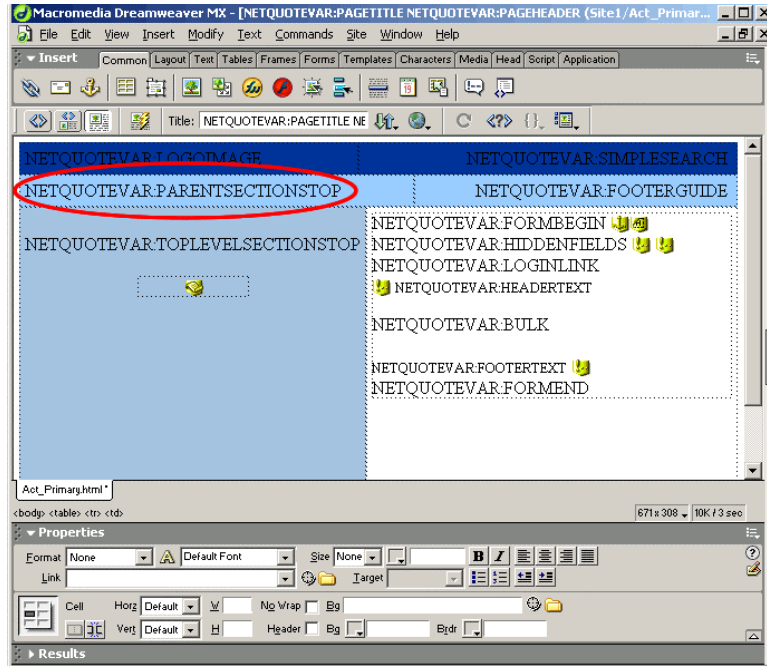
Variable	Description	Template Used
PAGETITLE	The name of the current brochure page	n/a
BROCHUREBODY	The bulk of the brochure pages	Various
BROCHURELOGO	The brochure logo image	Act_BrochureImage.html
HEADERGUIDE	The brochure navigation bar	Act_BrochureNavItem.html, Act_BrochureDisabledNavItem.html

Customising Overall Layout Templates

These exercises are based on the Actinic 'Clean Layouts' (in 'Design | Themes').

Inserting Parent Section Links into the Overall Layout Template

1. Go to 'Design | Themes' and change themes to 'Layout10'.
2. Open up 'Act_Primary.html' for editing within Dreamweaver.
3. Locate the HTML table row that contains `NETQUOTEVAR:SIMPLESEARCH`
4. At the beginning of that row is a table cell not being used. Enter `NETQUOTEVAR:PARENTSECTIONSTOP` into this cell.



5. Save the template.

We now need to remove the parent section links from the bulk of the page.

6. Open `Act_ProductBody.html` in Dreamweaver.
7. Edit the HTML code of the page and replace

```
NETQUOTEVAR:PARENTSECTIONSTOP
```

with

```
<!-- NETQUOTEVAR:PARENTSECTIONSTOP -->
```

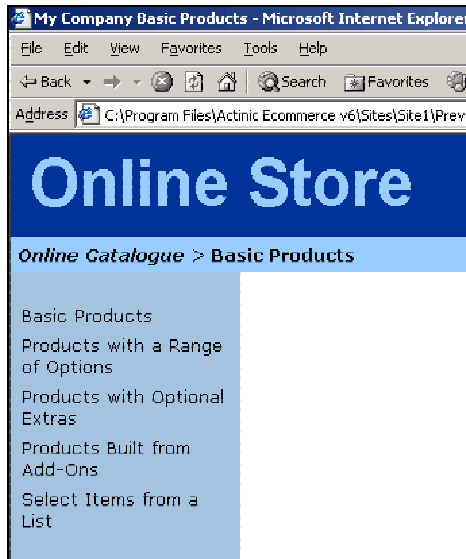
and replace

NETQUOTEVAR:PARENTSECTIONSBOTTOM

with

```
<!-- NETQUOTEVAR:PARENTSECTIONSBOTTOM -->
```

This will prevent the parent section links from appearing on the main body of the page, but will still allow them to be used within the overall layout template.

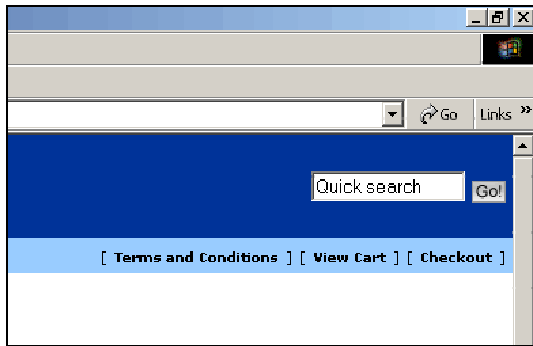


Only Using Certain Navigation Icons

The variables `NETQUOTEVAR:HEADERGUIDE` and `NETQUOTEVAR:FOOTERGUIDE` will insert a standard Actinic navigation bar in the following order: 'Home', 'Up a level', 'Store Top', 'Terms and Conditions', 'Search', 'View Cart', 'Checkout', 'Contact Us'. It is, however, possible to insert only certain navigation buttons in a specific order.

This exercise will remove all navigation buttons except 'Terms and Conditions', 'View Cart' and 'Checkout'.

1. Open 'Act_Primary.html' in Dreamweaver and delete `NETQUOTEVAR:FOOTERGUIDE`.
2. In its place, enter the following:
`NETQUOTEVAR:NAVBINFO NETQUOTEVAR:NAVBCART NETQUOTEVAR:NAVBCHECKOUT`
3. Save your changes and preview to see the result.



Note: A full list of NETQUOTEVARs for individual navigation buttons can be found earlier in this chapter.

It is also possible to break down a navigation item into its constituent elements. In other words, there are NETQUOTEVARs available for the link and alt-text for each navigation item. You can use these within the HTML of an overall layout template to include your own navigation objects that will link to Actinic online functionality. This is described below:

Variable	Example	Purpose
NETQUOTEVAR:NAVXXXXLINK	NETQUOTEVAR:NAVBCARTLINK NETQUOTEVAR:NAVBINFOLINK	The link for a navigation icon.
NETQUOTEVAR:NAVXXXXTEXT	NETQUOTEVAR:NAVBCARTTEXT NETQUOTEVAR:NAVBINFOTEXT	The description for a navigation icon.

Inserting Custom Navigation Icons

Use the instructions here if you want to create a custom icon that points to a page outside of Actinic's functionality, or else to a page within your brochure site, and you want it to 'rollover' in the same way as the other icons.

Assuming that:

- 'returns1.gif' is the name of the normal icon image
- 'returns2.gif' is the name of the highlight icon image
- 'returns_img' is the HTML name for the normal icon image
- 'returns.html' is the name of the file, within the 'acatalog' folder online, that you want to create a link to

This code will insert an image that rolls over:

```

    <A HREF="returns.html" TARGET="_self"
onMouseOver="SwapImage('returns_img','returns2.gif')"
onMouseOut="RestoreImage()">
    
</a>

```

In order to preload the highlight image, which will make it appear more quickly online, then locate the following code within the <body> tab in Act_Primary.html:

```
onLoad="NETQUOTEVAR:ONLOAD"
```

Change it to read

```
onLoad="NETQUOTEVAR:ONLOAD;PreloadImages('returns2.gif')"
```

Inserting 'Next' and 'Previous' Links

This exercise will insert links to 'sibling' sections in the online store. Sibling sections are sections that are next to each other in Actinic. The reason you may use this is if you sort all your products alphabetically within sections called things like 'A-C', 'D-F' etc. and you wanted to create links to take customers directly to the next (and previous) sections in the sequence.

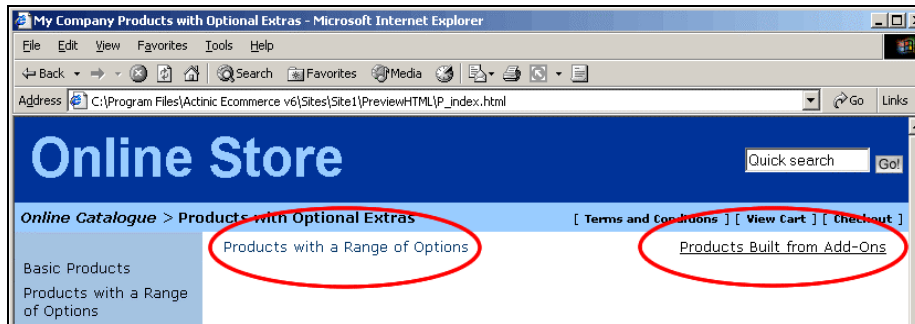
Insert the following code within Act_Primary.html (or whatever your overall layout template is called) just above the main bulk code in the template.

```

<table width="100%" border="0" cellspacing="0" cellpadding="0">
  <tr>
    <td>
      <a href="NETQUOTEVAR:PREV_SECTION_URL">
        NETQUOTEVAR:PREV_SECTION_NAME
      </a>
    </td>
    <td align="right">
      <a href="NETQUOTEVAR:NEXT_SECTION_URL">
        NETQUOTEVAR:NEXT_SECTION_NAME
      </a>
    </td>
  </tr>
</table>

```

This will insert links that look like the following:



Dynamic Section Lists

Actinic Developer gives you the ability to include dynamic section lists into the store pages. These section lists are automatically updated when you add new sections into your store. The section lists are built from a JavaScript array file (*.js) that Actinic will create, maintain and upload. You then have to include your own JavaScript code into the overall layout templates for your store that will read the section details within this array and present the information to your customers.

[IMAGE]

The big advantage of this technology is that any web site anywhere on the internet can read this JavaScript array file and use the data within it. Therefore, any affiliate site on the Internet can include a list of the sections in your store that will direct customers straight through. The content of this section list will never be out of date as Actinic will always keep the JavaScript file up to date.

You can use one of the following variables within the <HEAD></HEAD> tags of the overall template to create the JavaScript array:

- **NETQUOTEVAR:TOPLEVELSECTIONS_RAW** - Will cause the generation of a JavaScript file called **Act_sections.js** that contains all the names, URLs, image filenames, image heights and widths and section IDs of the **top-level sections** of the online store. Also creates the HTML in the store to incorporate that file.

In the HTML it becomes:

```
<SCRIPT LANGUAGE="JavaScript" SRC="Act_sections.js"></SCRIPT>
```

- **NETQUOTEVAR:SECTIONTREE_RAW** - Will cause the generation of a JavaScript file called **Act_section_tree.js** that contains all the names, URLs, image filenames, image heights and widths and section IDs for **every section** of the online store. Also creates the HTML in the store to incorporate that file.

In the HTML it becomes:

```
<SCRIPT LANGUAGE="JavaScript" SRC="Act_section_tree.js"></SCRIPT>
```

There is a third variable you can use - **NETQUOTEVAR:CHILDSECTIONS_RAW**. This performs the same function as the variables already described (creating a JavaScript array containing the section details) but this variable will be substituted for the information about the sub-sections **within** the current section. In other words, the section information it contains will depend on what section page it is being used within. This placeholder works differently as it will actually embed the JavaScript array into the page when the pages are generated. It does not cause the creation of an external JavaScript file.

Creating a Drop-Down List Containing the Top-Level Sections in the Store

This exercise will insert a drop-down list containing a list of top-level sections into the HTML of your store. As soon as a customer selects a section, they will jump to it.

1. Paste the following code within the <HEAD></HEAD> tags of the overall layout template(s) you are using in your store.

```
<!--@act NETQUOTEVAR:TOPLEVELSECTIONS_RAW -->
```

This will become the reference to the external JavaScript file 'Act_sections.js'. It will also trigger the creation of 'Act_sections.js'.

Note: The variable is within special 'Actinic Comments' (standard comments with '@act' inserted within it). This is to prevent the variable from disrupting the visual rendering of the page within Dreamweaver.

2. Underneath the variable, enter the following JavaScript (you will find it easier to copy this from an electronic document such as the Advanced User Guide):

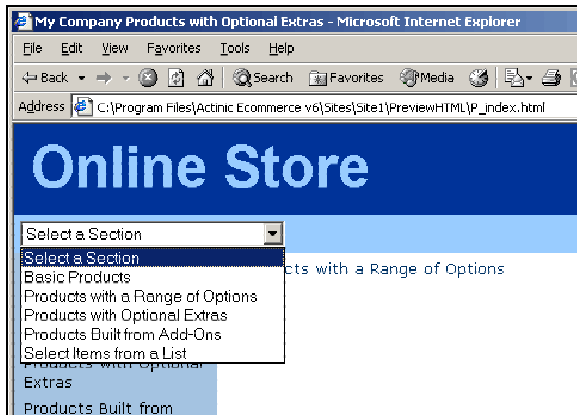
```
<SCRIPT LANGUAGE="JavaScript" TYPE="text/javascript">
<!--
/*****
*
*
* ACT_DropListBox - creates the HTML for the SELECT listbox
*
*****/

function ACT_DropListBox(ar)
{
  var strIDs = '<SELECT SIZE="1" NAME="ACT_droplstbox"
onChange="if(options[selectedIndex].value)
window.location.href=(options[selectedIndex].value)">'
  var sel = " SELECTED"
  strIDs += '<OPTION ' + sel + ' VALUE="">Select a Section</OPTION>'
  for (var i=1;i<=ar.length;i++)
  {
    if (ar[i].sURL !=null)
    {
      strIDs += '<OPTION VALUE="' + ar[i].sURL + '&ACTINIC_REFERRER=' +
escape(location.href) + '">' + ar[i].sName + '</OPTION>'
    }
  }
  strIDs+='</SELECT>'
  return strIDs
}
//-->
</SCRIPT>
```

This code will read the information from the JavaScript array and lay it out as a drop-down list.

3. Enter the following code where you want to insert the drop-down list in the main body of the page:

```
<form name="Act_SectionDroplist">
  <script
    language=Javascript1.1>document.write( ACT_DropListBox(sections) )</script>
</form>
```



Notes:

1. If you get spacing problems in the previewed store (i.e. there is unwanted space either above or below the drop-down list), try moving the `<form>` tags outside the `<td>` tags.
2. If you are including the section list form within the bulk of a page, you will need to precede the code with the following line:

```
</FORM>
```

and then enter the following lines after the form code:

```
<FORM METHOD=NETQUOTEVAR:CGIMETHOD ACTION="NETQUOTEVAR:CGIURL">
```

```
<INPUT TYPE=HIDDEN NAME="SHOP" VALUE="NETQUOTEVAR:SHOP">
```

This is to ensure the continuation of the main store page form either side of the special section drop-down form.

Inserting The Top-Level Section in Large Font, With the Sub-Sections Listed Underneath

This code will create a section list in the following style:

First Section

Subsection 1, Subsection 2

Second Section

Sub section 1, Subsection 2, Subsection 3

It only covers a single depth of subsections, but it is an attractive way to display your sections to your customers.

1. To begin, insert the following code into the <HEAD></HEAD> section of the overall layout template(s):

```
<!--@act NETQUOTEVAR:SECTIONTREE_RAW -->

<SCRIPT LANGUAGE="JavaScript" TYPE="text/javascript">
<!--
function DisplaySections(ar)
{
var strIDs = '';
for (var i=1;i<=ar.length;i++)
{
if (ar[i].sURL !=null)
{
strIDs += '<a href="' + ar[i].sURL + '&ACTINIC_REFERRER=' +
escape(location.href) + '"><span class="actregular">' + ar[i].sName +
'</span></a><br>';
if (ar[i].pChild)
{
for (var j=1;j<=ar[i].pChild.length;j++)
{
if (j < ar[i].pChild.length)
{
strIDs += '<a href="' + ar[i].pChild[j].sURL +
'&ACTINIC_REFERRER=' + escape(location.href) + '"><span
class="actxsmall">' + ar[i].pChild[j].sName + '</span></a>, ';
}
else
{
strIDs += '<a href="' + ar[i].pChild[j].sURL +
'&ACTINIC_REFERRER=' + escape(location.href) + '"><span
class="actxsmall">' + ar[i].pChild[j].sName + '</span></a>, ...';
}
}
}
}
}
strIDs += '<br><br>'
}
}
return strIDs
}
}
//-->
</SCRIPT>
```

Again, it will be much easier to copy and paste the above code from an electronic document like the Advanced Users Guide.

2. Then, open Act_CatalogBody.html and replace **NETQUOTEVAR:PRODUCTBODY** with the following code :

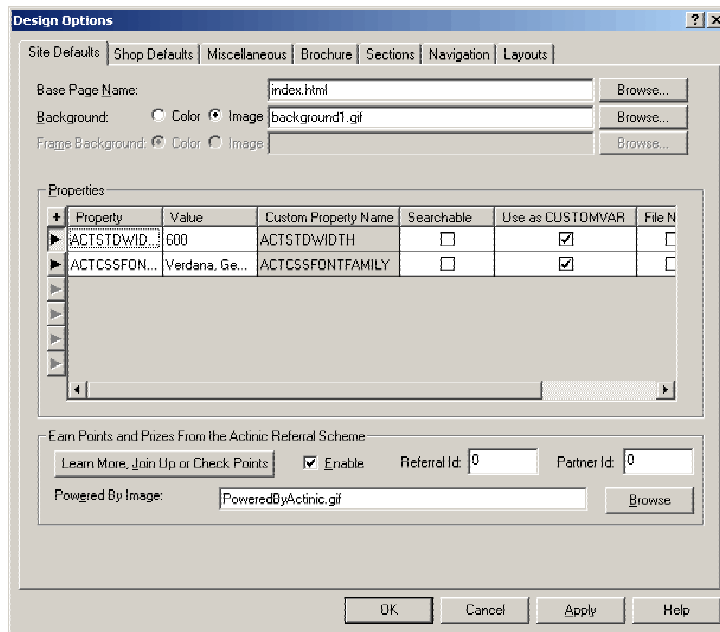
```
<script language=Javascript1.2>  
    document.write(DisplaySections(sections))  
</script>
```

Note: Removing **NETQUOTEVAR:PRODUCTBODY** will mean that you won't be able to display any products on the front page of your store.

Custom Properties

'Custom Properties' are data fields you can define in addition to the 'core' fields of 'Short Description', 'Full Description' etc. An example of a use of this would be a bookshop. You might want to have an 'Author' value, a 'Number of Pages' value and a 'First Published' value against each book.

You define them in 'Advanced | Custom Properties' and then supply values for them within the 'Properties' tab of a product. You can set default custom property values for an entire section within the 'Properties' tab of a section and you can define default values for the entire site within 'Design Options | Site Defaults'.



Creating Custom Pop-Up Windows

This technique will allow people, when they click on a product image, to pop open a new window containing your own custom page, rather than the Actinic pop-up window.

Note: Don't forget that to get Actinic to create a pop-up window with more information for a product, you can use the 'Extended Information' tab of a product. This exercise is for creating non-Actinic pop-ups.

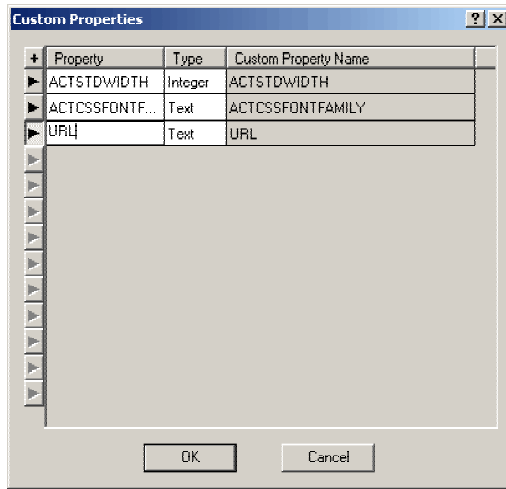
1. To begin, you must define a function in the HTML headers of each page of the store that will control the pop-up windows. To do this, open up the overall layout template and insert the following code somewhere within the <HEAD></HEAD> tags:

```
<script language="JavaScript">

function popUp(url) {
    window.open(url, 'newwindow',
'width=620,height=510,menubar=off,directories=off,toolbar=off');
}

</script>
```

2. Now close and save this template and go into 'Advanced | Define Custom Properties'. Create a new custom property called 'URL'.



3. Now open up 'Act_ProductLine.html' (or whatever product layout template(s) you are using) and replace

NETQUOTEVAR:PRODUCTIMAGE

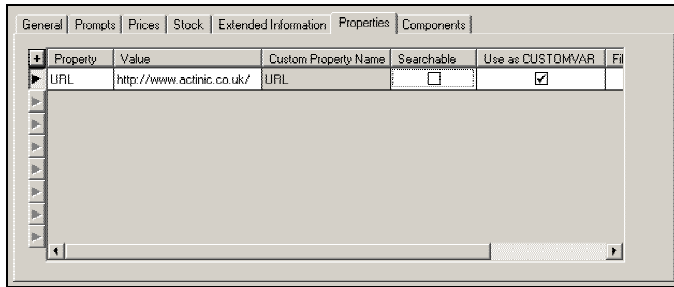
with

```
<A
  HREF=" javascript:popUp( 'CUSTOMVAR:URL' ) ">NETQUOTEVAR:PRODUCTIMAGE</A>
```

You can now go into each of your products (or sections) and specify a value for 'URL' as follows:

1. Double click a product or section.
2. Within the Advanced view, click on 'Properties' and click the '+' symbol to specify a new variable value.

3. Now select 'URL' from the drop-down menu, and enter a value as follows:
- For another web site, enter the complete URL. i.e.
http://www.mysite.com/index.html
 - For another HTML page that is held locally, ensure the file within your site folder (normally called 'Site1') and then enter the name of it in the 'value' field and click on the 'File Name' check box.
 - For an image file, in the value field, enter the filename (i.e. test.jpg) and then click on the 'File Name' check box.



Note: If you do not want to use product images, then simply replace 'NETQUOTEVAR:PRODUCTIMAGE' in popup.txt with 'Click Here' or similar text. You will still need to insert the code into Act_ProductLine.html, but do not replace NETQUOTEVAR:PRODUCTIMAGE. You could even define a new custom property called something like 'Clickable Text' to define different clickable text for each product.

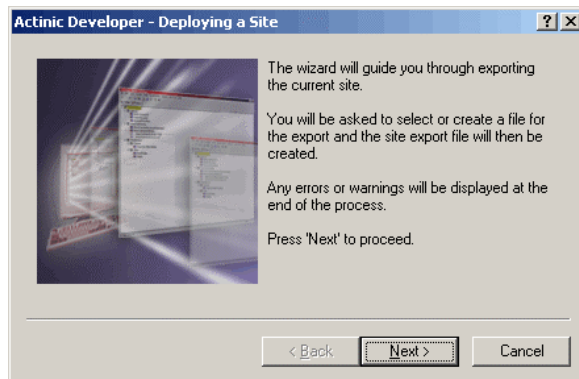
Deploying Your Work

Once you have created a site, you may need to deploy your work onto a client's premises for them to take over the maintenance of the store. Actinic Developer has a 'Deploy Site Snapshot' facility to help you with this.

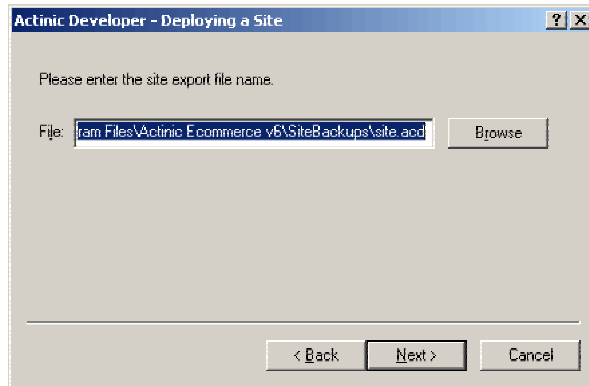
The first thing you need to consider is what Actinic Ecommerce program your client will need in order for them to run the Actinic store.

- If your client will simply be downloading and processing the orders from the store, and you will maintain control over uploading the store, then they will require **Actinic Order Manager**.
- If your client will be adding products and sections, and making price changes, as well as processing orders, then they will need **Actinic Catalog**.
- If your client will be maintaining customer accounts and price schedules, using the external linking feature or using Actinic Link to transfer order details then they will need **Actinic Business**.

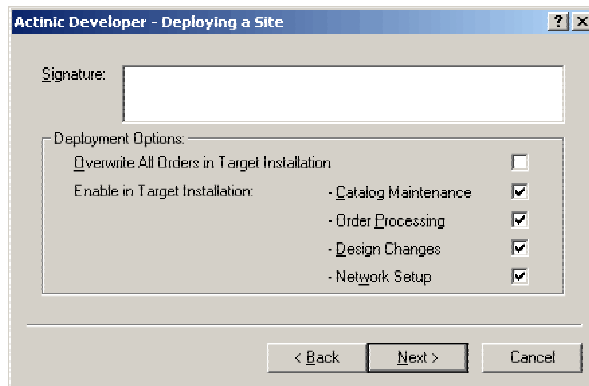
Once you have established this then you will need to create a site file. To do this, go to 'Developer | Deploy Site Snapshot...'



Click 'Next >' to continue, and then 'Next >' again once you have read the text in this panel.



This is where you specify where you want the site snapshot (basically a zip file with an extension of *.acd) to be created. The default location is the 'SiteBackups' folder but you can click 'Browse...' to select an alternative location. Click 'Next >' when you are ready to continue.



This is where you set up whether you want to transfer order details with the deployed site, and also whether you want to disable any features in the target installation. For instance, if you do not want a client changing any aspects of the design then un-tick 'Design Changes'. You can also enter a signature that will be shown to clients as the site file is imported.

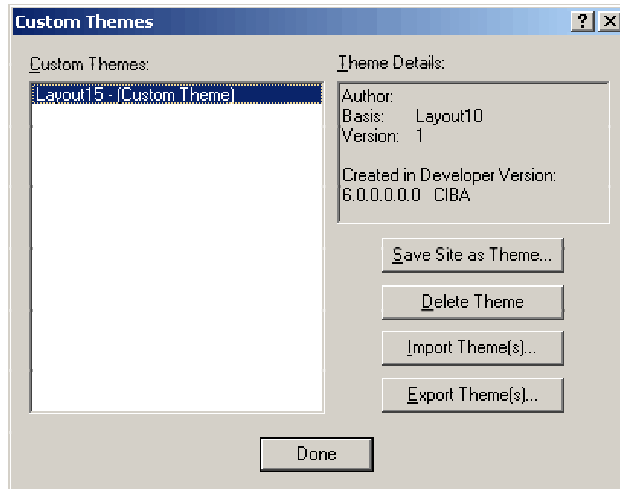
Click 'Next >' when you are ready to continue and then 'Next >' again to begin the creating the site snapshot.

This file can now be transferred to a customers PC where Actinic Ecommerce is installed, and then imported by going to 'File | Snapshot | Import Site'.

Note: In order for this to work successfully, your client's copy of Actinic Ecommerce has to have the same version number as the copy of Developer that provided the site file. You can check this by going to 'Help | About...'

Creating Custom Themes

You can also save your design changes by going to 'Advanced | Custom Themes...' and saving your work as a 'Custom Theme'. This will create your design as a theme in the Theme Manager. You will have the option to associate the current colour scheme with the theme, in order to always fix your design with the correct text colours etc.



Themes can also be exported and deployed as an *.acd file in the same way as a site (above). To do this, click the 'Export Theme(s)...' button to launch the 'Export Themes' wizard.

Although only Actinic Developer has the ability to export themes, themes can be imported into Actinic Catalog and Actinic Business via 'Advanced | Custom Themes'.